

Strange (or not so strange) routes, rates or dates

John Hunter

Feb 3, 2022

1904 – Sheffield to St. Petersburg – arrived before it was posted.



Posted April 8,
Arrived March 29.

(Russia was still using the
Julian Calendar, 13 days
behind the Gregorian)



1912 – Japan to Sheffield, via Trans-Siberian Railway.

Posted 31 Dec, 1911

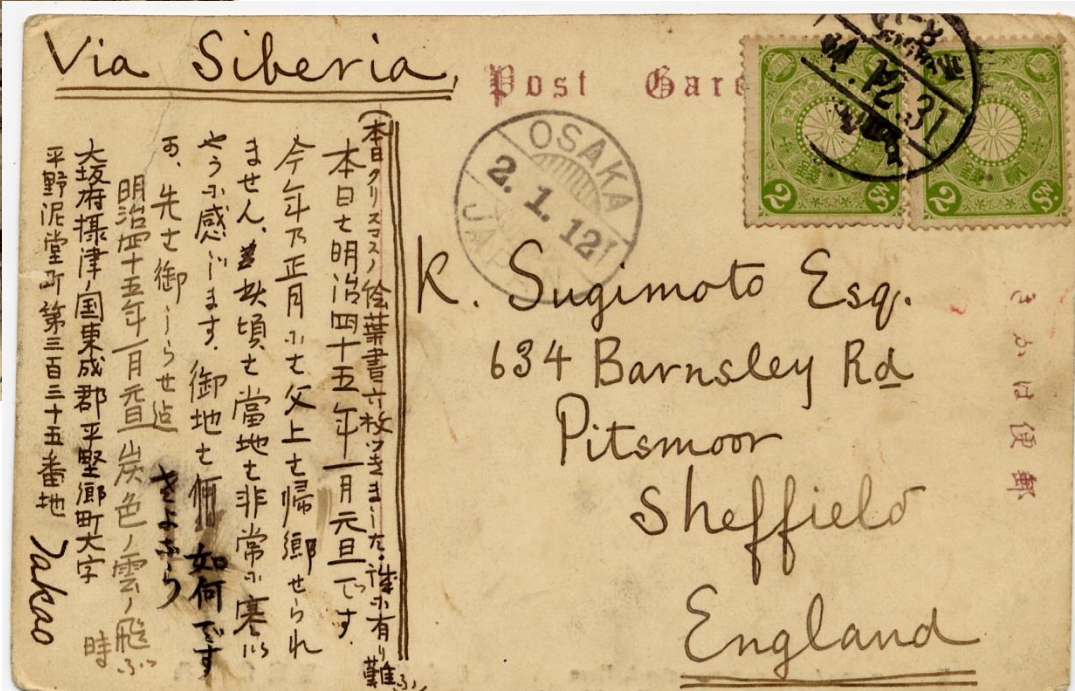
Arrived ?

(via Osaka, Vladivostok, Moscow,
St. Petersburg, Liverpool?)

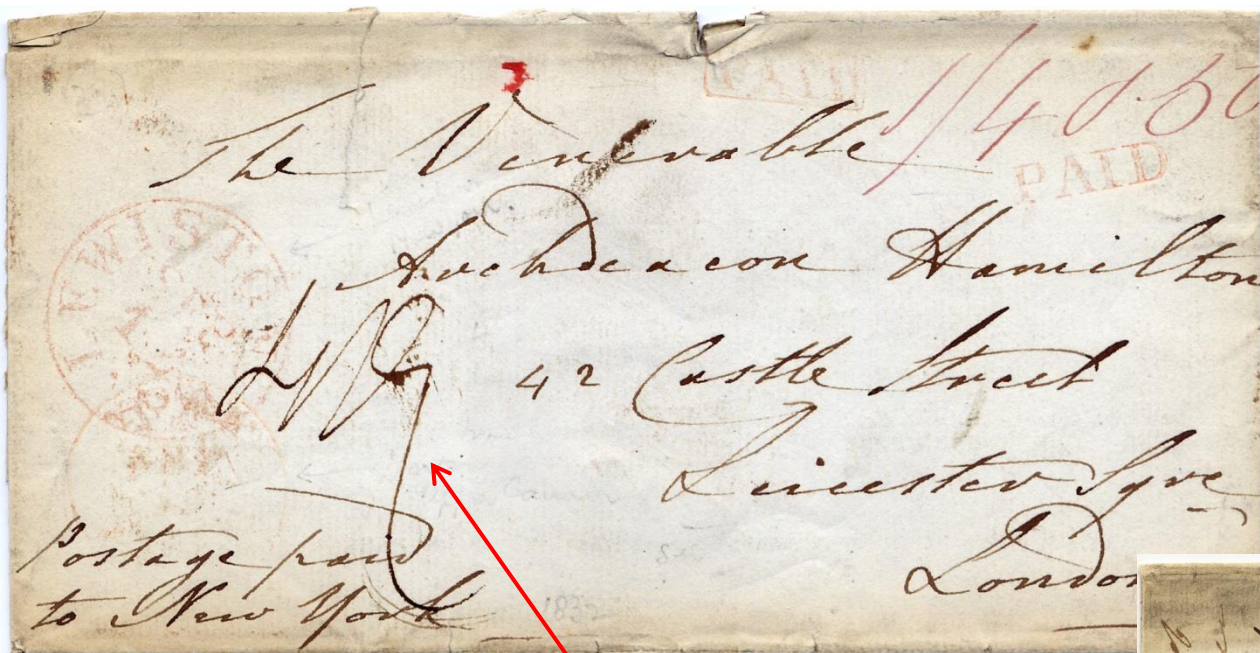


Entire view of the primary school, Kure.

景全校學小等高



1832 – Toronto (Canada) to London, via Lewiston, New York & Liverpool.



Postage pre-paid from Canada to New York (1s 4d to US border, then 2 x 25c = 50c from Lewiston to New York (double rate).

From the Bishop of Quebec (Lower Canada) to Archdeacon Anthony Hamilton, SPG secretary

Trans-Atlantic & GB Postage collected in London:

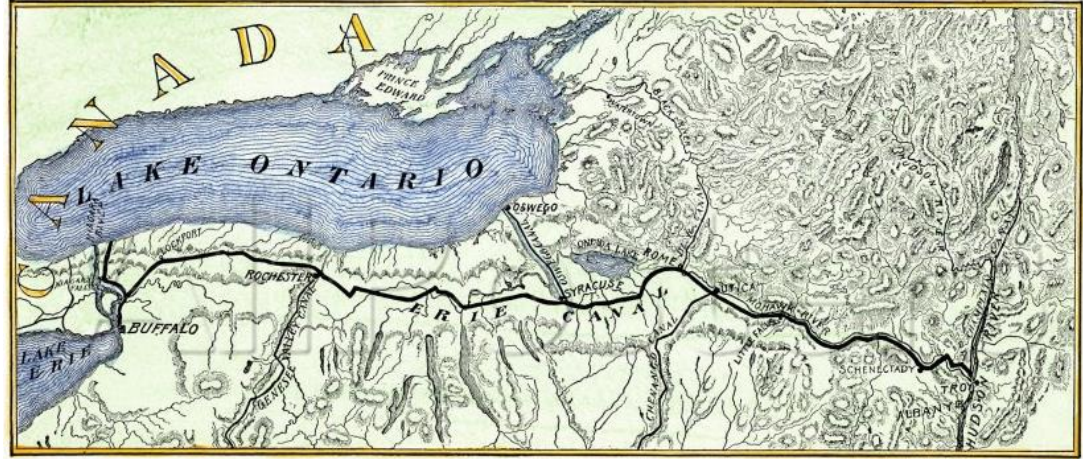
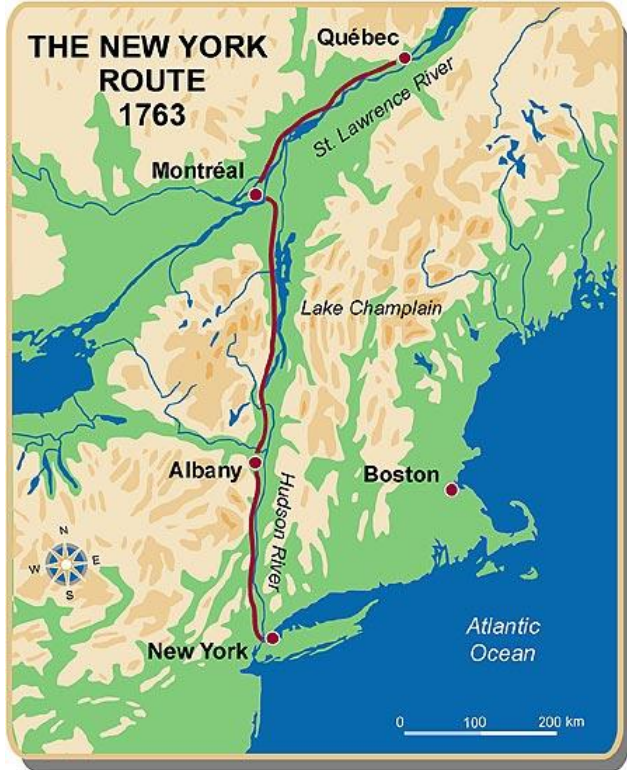
Dist. 170-230 miles = 11d.

Ship letter charge = 8d (total = 1s 7d)

Triple letter rate 3 x 1s 7d = 4s 9d.



1832 – Toronto (Canada) to London, via Lewiston, New York & Liverpool.



**The letter travelled via the Erie Canal
(opened in October 1825)**

